

Subdivision of
WOODLAND PARK
 in Land Lot 52-18th District
 DEKALB COUNTY GA.

Scale: 1"=50'
 March 28, 1940
 Lyndon Kelly
 Engineer

TRUST ASSOCIATES INCORPORATED
 DEVELOPERS

1940

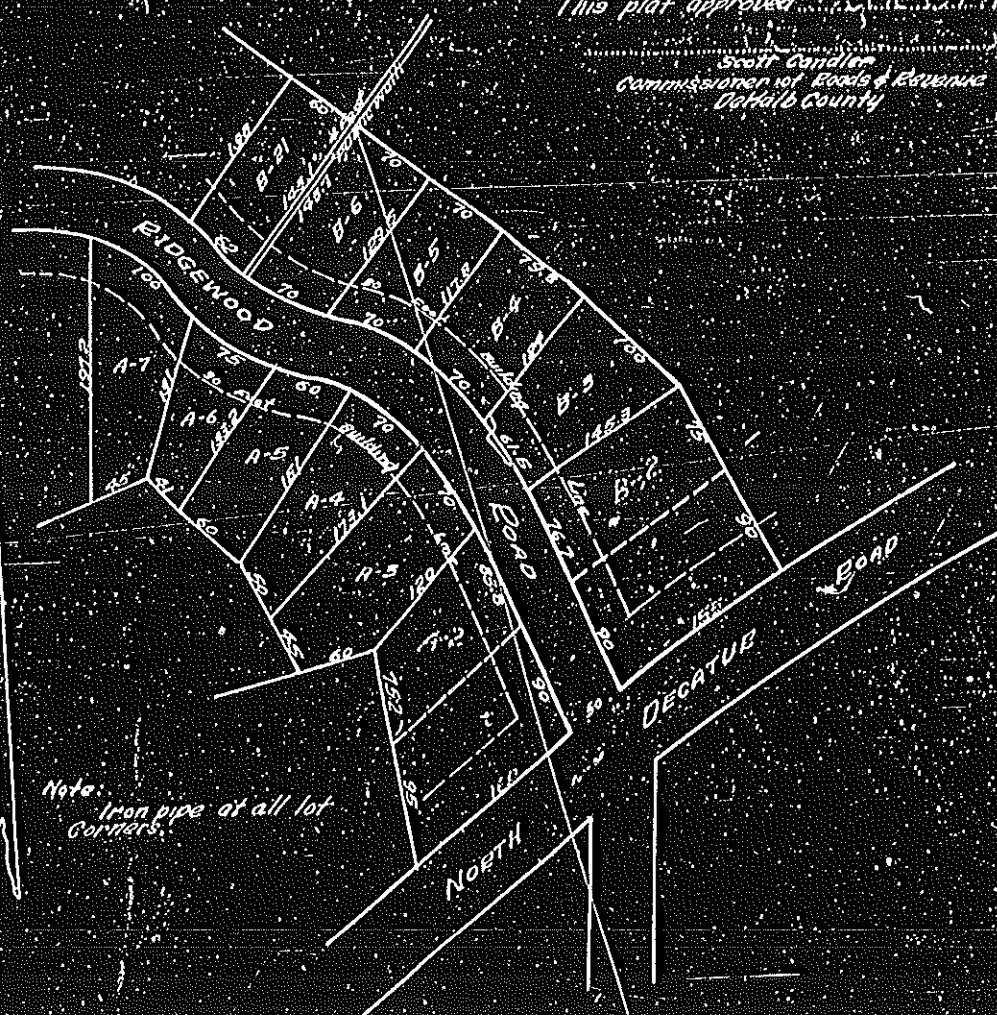
1941

Restrictions

Lots in this subdivision are sold subject to restrictive covenants set out in the agreement executed by the Tufts Associates, Inc. as recorded in deed book 518 - page 522 - DeKalb County Records.

This plat approved _____

Scott Candler
Commissioner of Roads & Revenue
DeKalb County



Note: Iron pipe at all lot corners.

Extension No. 1
of
WOODLAND PARK
1st Land Lot 52 - 18th Dist. DeKalb Co.
Scale: 1" = 100'
Feb. 28, 1941
Gordon T. Kelley, Esq.
1941

1941