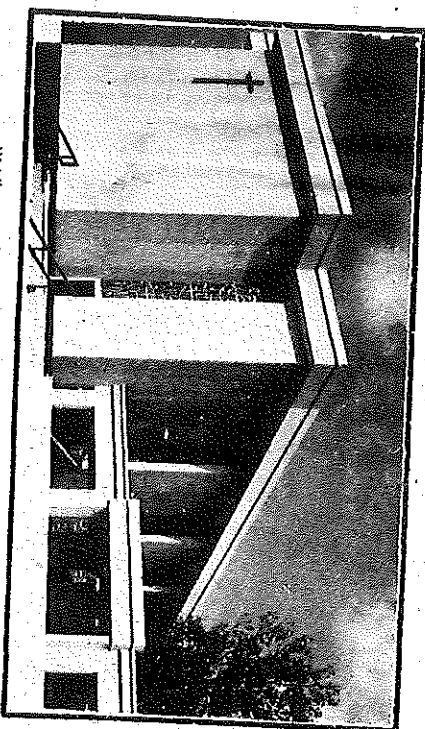


Chamblee First church has begun a weekly radio broadcast on station WCKA-AM in Decatur. Also, the church is beginning a counseling ministry this month. 1-5-58

# FIRST BAPTIST CHURCH OF CHAMBLEE

Ministering in North DeKalb since 1875



*"Where There's A Sweet Sweet Spirit"*

The contemporary beauty of our new sanctuary proclaims the belief that the God of the ages is in our midst especially today.

Sunday School 9:30 A.M.

Worship 11:00 A.M., 7:00 P.M.

**EARL H. CRAIG, JR.**  
Pastor

**CHARLES F. PASSMAN**  
Minister of Music  
Associate Pastor

**NORMAN P. PLUNKETT**  
Minister of Education  
Administrator

**SID. A. HOPKINS**  
Minister of Youth  
and Outreach

457-0204

**5303 NEW PEACHTREE ROAD, CHAMBLEE**  
(Just North of the Peachtree DeKalb Airport)

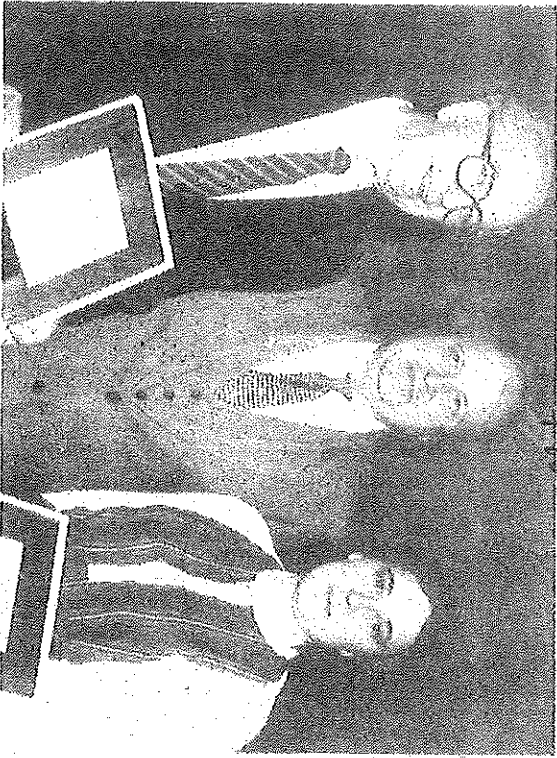
## Chamblee First Baptist

Plans are progressing for a youth Valentine Banquet on Saturday, Feb. 10 at 7:30 p.m. An Hawaiian decorative scheme will be used and the "Celebrate" musical group will participate in the program. All tickets will be \$1.75 and must be purchased by Wednesday, Feb. 7.

On Sunday night, Feb. 11, after the evening service, the Acteens will host a reception in Fellowship Hall for their parents to familiarize them with what the Acteens are doing at the church. All girls and their parents are invited to a *Twing we*  
*The Magazine, 2/7/1973, p. 18*

The Christian Index

1983-84



TWO CHAMBLEE FIRST church members were honored by the Association for Retarded Citizens-Atlanta for service to mentally-retarded individuals. Shown are (l/r) Jack Anthony, association president Don Chapman and Mrs. Donna Thompson. Mr. Anthony is on board of directors of Annandale home for mentally-retarded people in Suwanee and has led worship services for the home for several years. Mrs. Thompson leads a Sunday School ministry for mentally-retarded persons at Chamblee First.

Chamblee First church has  
begun a weekly radio broadcast  
on station WGKA-AM in Deca-  
tur. Also, the church is begin-  
ning a counseling ministry this  
month. 1-5-84

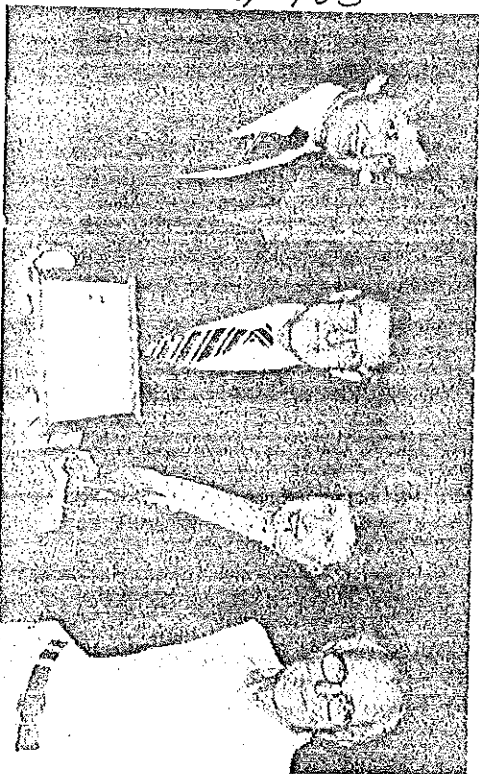
SUBJECT FILE

CHAMBLEE

RESEARCH

Chamblee  
EX-111  
B-1111

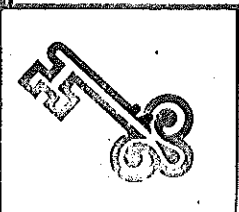
The Christian Index  
June 9, 1983



CHAMBLEE FIRST church was recognized by J.C. Penney Company as one of five winners of the "Golden Rule Award" for work with Cambodian refugees in its community. Shown are (l/r) pastor David Sapp and members Fred Henderson, Beth Ann Boland and Howard Bond who have been leaders in the work. A \$1,000 grant and a small statue were given the church during a ceremony in Atlanta.

# Keynotes Dekalb

*Dekalb News/Sum* 6/10/92 On



STONE MOUNTAIN CHRISTIAN WOMEN'S CLUB held its June luncheon Monday at Jo-Lin Banquet Hall, Tucker. Pat Carson spoke on "Getting Control of Our Lives." Toni Anderson from Atlanta University sang, and Martha Wilson shared an interesting story.

NELSON AND SHARLYN GRANADE announce the birth of their first child, James Douglas, April 22 at DeKalb Medical Center. The grandparents are Doug and Kay Owens of Vancouver, British Columbia, and Natti and Sarah Granade of Warner Robins, Ga. The paternal great-grandparents are Alethea Bates of Warner Robins, and Kermit Bates of Bainbridge, Ga. The maternal great-grandparents are Edna Bell of Mobile, Ala., Verta Hue Owens, Theodore Owens and Beryl Robinson, all of Atmore, Ala. The maternal great-grandmother is "Grammy Owens" of Atmore, Ala. The father is the pastor of Emory Baptist Church.

BOB AND NANCY CALVERT announce the birth of a son, Zachary Andrew, May 11 in Nairobi where they serve as Baptist Foreign Missionaries. The mother is the former Nancy Felt of Atlanta.

KIMBERLY AND RICKY COWART of Clarkston announce the birth of a second son, Jean Justin Brice, on May 13 at DeKalb Medical Center. The grandparents are Louise and Frank Burton of Shreveport, La., and Edith Cowart of New Orleans, La., and the late Clemmie Cowart. The other son is Marlin, 13 months old.

FIFTY-FOUR STUDENTS from across Georgia were selected to serve as 1992 Baptist Student Union Summer Missionaries. Their length of service is between 10 days to 10 weeks. Ministers range from church starting in Metro Atlanta to building houses in Savannah. From this area are: Georgia Tech, Cindy Burrell in Oregon; Georgia State Univ., Jennifer Miller in Oregon; Emory University, Po Service in Nebraska; Georgia Baptist School of Nursing, Stephanie Hardean in Connecticut; Emory University, Karen Jackson and Russell Gibson, Germany.

JACK AND LORRAINE HENDERSON and family of Philadelphia, Pa. are recent newcomers to the Doraville area.

BAPTIST CHURCH STAFF CHANGES include: Kay Dreyer, director of childhood education at First Avondale Estates; Ed Galbreath, new pastor of Bouldercrest; William J. Ireland, Jr., pastor of Briarcliff; Jerry Daniel, associate pastor/church growth and worship at Clairmont Hills; Micki Ivey, secretary at Rainbow Park; John W. Wyatt, pastor of Tucker First; Tract Johnson, summer program intern at Chamblee First.

MR. AND MRS. JOHN ABBOTT and family are recent newcomers to the Stone Mountain area from Phoenix, Ariz. She has relatives living in this area.

CLIFTON AND ANNE SWANSON recently toured in Mexico, where they photographed old ruins, preparatory to writing a book.

LOUISE WAGGONER is a patient at DeKalb Medical Center.

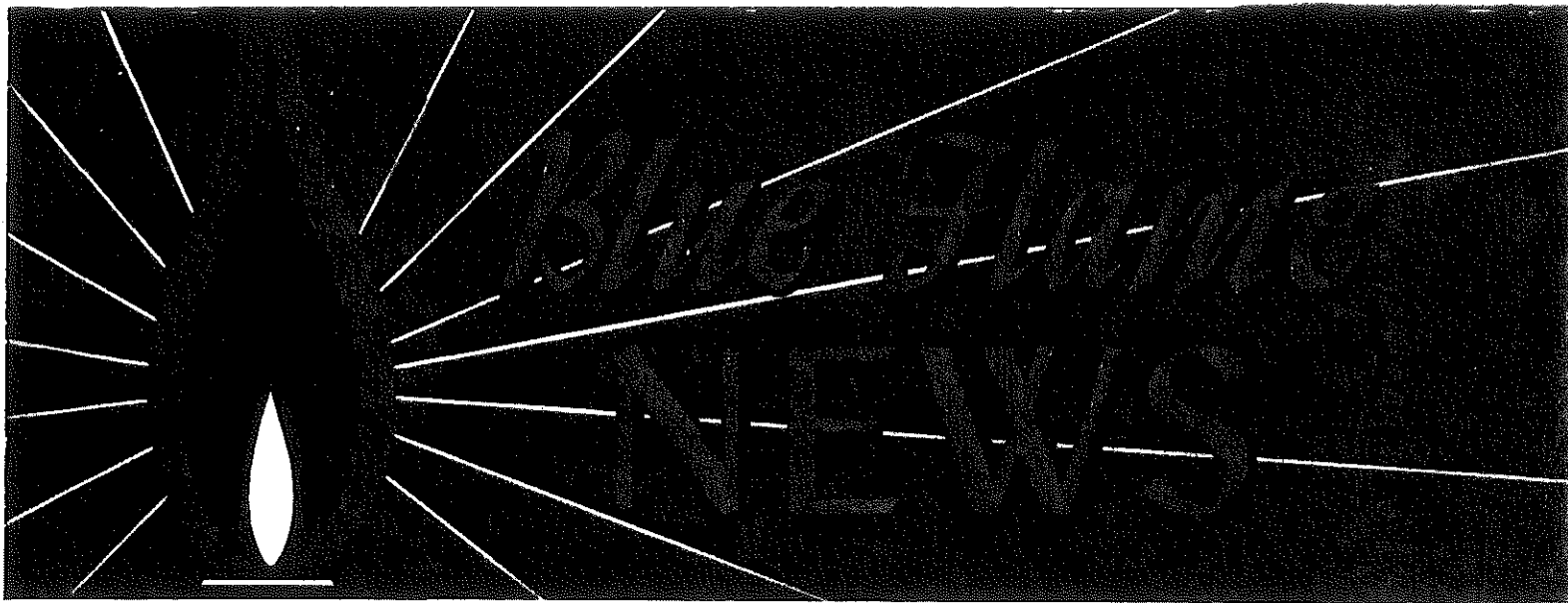
JOHN HARRELL, son of Mr. and Mrs. Tom Harrell of Atlanta, has been inducted into OKU Honorary Professional Dental Society and will graduate with honors from the Medical College of Georgia School of Dentistry, Augusta, on June 6. John will enter a two year periodontic specialty program also at MCG beginning July 1.

JOYCE AND FRED KUHSTOSS OF Stone Mountain announce the birth of a son, Christopher Michael, on May 12 at DeKalb Medical Center. He weighed six pounds, six ounces.

STEPHANIE AND MYRON SIMMONS of Decatur announce the birth of Kenyatta Shunite on April 6 at Northside Hospital. He weighed nine pounds, five ounces.

*Ch...  
P...  
K...*

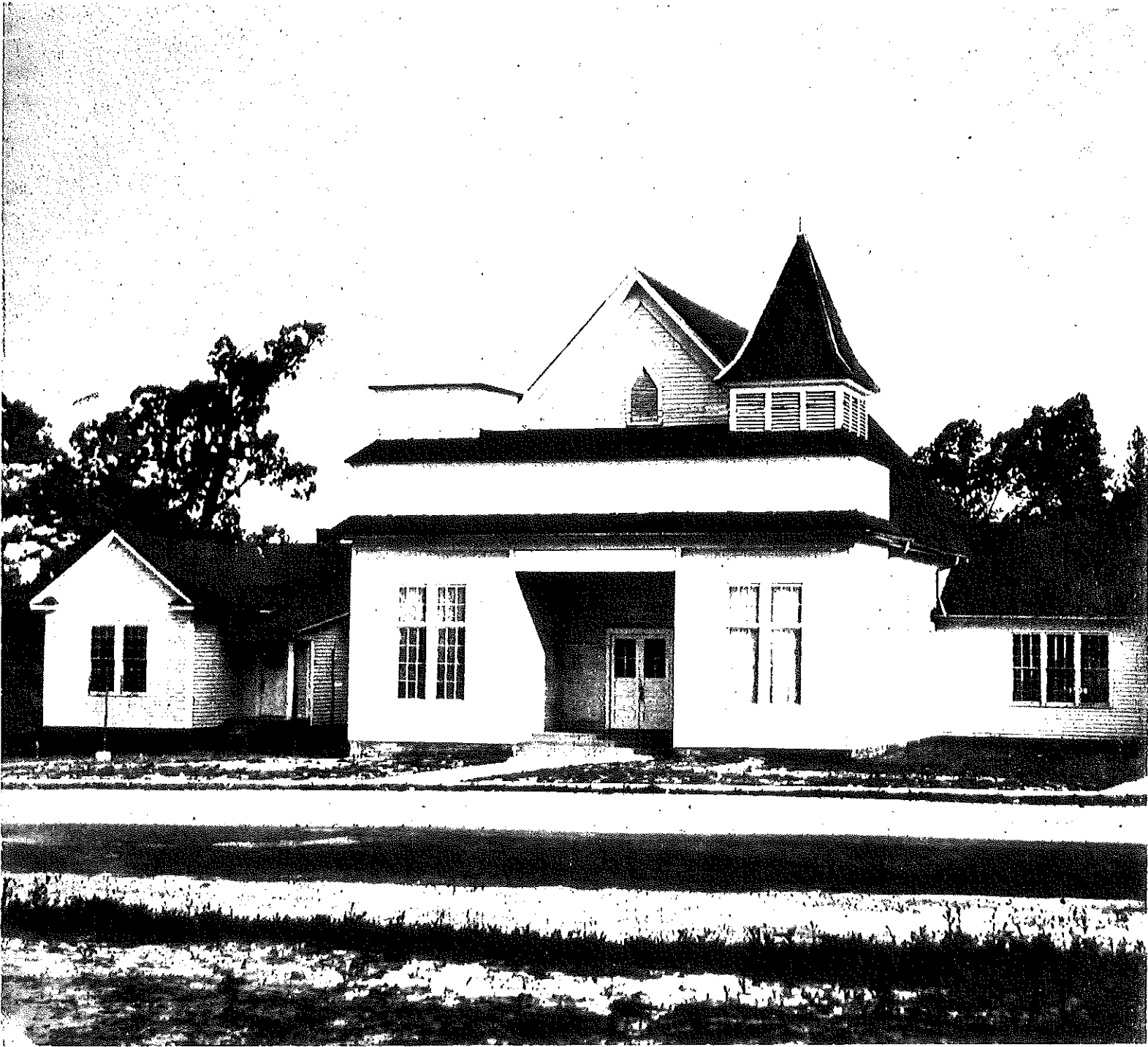




Volume 3

MAY 1952

Number 5





# Chamblee . . .

## One of North Georgia's Most Progressive Communities

ALTHOUGH CHAMBLEE was incorporated as a town only a little more than forty years ago, it is one of the oldest communities in North DeKalb County. In recent years it has also become one of the most important industrial areas in the Southeast.

The original settlement started around the Prospect Methodist Episcopal Church, South, which was organized in 1828. The first house of worship was built of split logs on an acre or an acre-and-a-half of ground designated for the purpose by a Mr. Reeves. Although Mr. Reeves died before the proper deeds conveying the property to the church could be drawn up, his wishes with regard to the church property were carried out by J. Y. Flowers, administrator of his estate. Among the charter members of the church were Stephen Tilley and family, J. M. Riddling and family, two Ballenger families and Mrs. Margaret McElroy.

Since its organization, the Prospect Church has bought two additional tracts of land. The grounds and cemetery now cover eleven acres and the third church building occupies the site. The early churches had several rows of pews reserved for the colored worshippers in the community.

Chamblee was incorporated as a town, under an Act of the Legislature approved August 17, 1908. It was named by the United States Post Office Department for one of the signers of the petition for the establishment of a post office in the locality.

The petitioners first requested that the new post office, to be located on the Richmond and Danville Railroad, now a part of the Southern system, be named Roswell Junction, because the line to Roswell branched off at this point. The Post Office Department objected to this name on the grounds that it might be confused with the name of the existing post office at Roswell. A second name was submitted by the local citizens but

it, too, conflicted with the name of another post office, so the Post Office Department asked if it might pick a name at random from the list of petition signers. This permission was granted, and Chamblee, the name of a colored section hand who worked on the railroad, was selected. The name proved agreeable to the other signers for the new post office.

For many years before the use of automobiles became so prevalent, a commuters train, known as the Air Line Belle, ran through Chamblee. It was very popular with shoppers, business people and school children. It ran from Atlanta to Lula or Toccoa, depending on the season of the year.

One of the landmarks at Chamblee, remembered by thousands, is the former Camp Gordon site. Camp Gordon came into existence during World War I. Here, from September 1917 through November 1918, more than 130,000 soldiers and officers were mobilized. The huge infantry training camp covered 2600 acres of land on the east side of the Southern Railroad and was the training ground for the famous, crack 82nd Division. It is said that many soldiers from Camp Mead and other northern camps volunteered to go south to

Camp Gordon where the weather would be warmer for training, only to experience the coldest winter this section had known in thirty years. Remnants of the original camp may be seen today, including the original headquarters, the bandstand, etc.

Among the early schools in the Chamblee area was the one-room, one-teacher, Wallace school. Later the citizens decided to build a better school at Hood and Peachtree Road, where the First Baptist Church, formerly the Corinth Baptist Church and cemetery, now stand. The county authorities decided to move the school to Johnson's Ferry Road, near the site now occupied by the Oglethorpe Apartments. When the school was moved the public spirited citizens of the community built another school, to which parents, bachelors and other citizens made regular contributions for its upkeep and teachers' salaries.

This community enterprise prospered and the citizens continued to own their own school property until World War I, when the Government purchased the land as a part of Camp Gordon. With the money received for the school the citizens bought more property and with help from the county, erected a new school. This entire project was deeded to the county to operate. Today, Chamblee has one of the finest public schools in the State and its several hundred high school students come from all North DeKalb County. This is considered one of the most progressive and best administered schools in the section.

Another fine educational institution



*First Baptist Church at Chamblee*



*Chamblee Public School*

are Westinghouse Lamp Division; General Electric Apparatus Division; The John Deere Plow Company; American Hospital Supply Corporation; J. I. Case Machinery Company; Allis Chalmers; Auto-Vent Shade Company; Sieberling Rubber Company; Massey-Harris Company; The Carborundum Company; Southern Iron and Equipment Company; Williams Bros. Company, a pipeline Construction firm; Georgia Tractor and Equipment Company and Roberts-McGeeny Printing Company. New plants for the Stay Rite Products Company, Mosteller Feed Company and Minneapolis Moline Farm Equipment Company are under construction. In addition to these large industrial plants, there are lumber mills, a large construction company and other businesses. Most of these industries are consumers of natural gas.

The industrial area at Chamblee is very neat. To keep pace with the town's growth, a new city hall and fire station have recently been built.

Natural gas was first served in the Chamblee area to Lawson General Hospital. Service to residential customers in Chamblee was begun in the early part of 1949. The distribution system of the whole North DeKalb area is integrated with Atlanta's system. The industrial plants are serviced from Atlanta and the residential customers, from our office at Buckhead.

**CORRECTION:** Last month's issue of the BLUE FLAME NEWS reported the United States Envelope Company as being located in Doraville. It does have a Doraville post office address, but further checking shows the plant actually to be located in the city limits of Chamblee.

at Chamblee is Southern Technical Institute, a unit of the Georgia School of Technology. The school trains technicians for industry, to fill the jobs between the engineer and skilled worker. The school was founded in 1948 after intensive surveys and information from the Associated Industries of Georgia indicated that this type of training was desirable to supply the specialized personnel needs of industry. Southern Tech is a full time, permanent, two year college and has been selected by the gas fuel industry as the training headquarters for gas fuel technicians. It is the only school in the nation that offers a two year course in this subject. Twenty-nine fully paid, two-year scholarships are supported by the gas industry. Two of these are supported by our own Company.

Lawson Veterans Administration Hospital in Chamblee was built by the Army at a cost of \$3,500,000 and commissioned in 1941 as a general medical and surgical hospital. It has one hundred and sixty-nine buildings that cover a hundred and forty acres of land. During World War II, it was primarily an amputation and neurosurgical center. In 1946 it was taken over by the Veterans Administration as a general surgical and medical hospital.

The airport at Chamblee, now used as a Naval Air Base, was built by DeKalb County with federal aid. In 1942, it was made available to the government and commissioned as a primary flight training station. After a year this program was abandoned and the station was used the next three years as an Instrument Flight Instructors' School, and Operations Officers' Training Base. The facilities are now used solely for

the training of Naval Air personnel. Chamblee's industrial development began in the '40s after DeKalb County had completed its fine water system with a 30-inch main, and after Industrial Boulevard had been completed. The area's splendid climate, excellent transportation facilities and easy accessibility make it an ideal distribution point to the Southeast. For this reason many regional and branch offices of huge, nationally famous corporations have been built there, along with large, locally owned industries.

The first industrial plant to locate at Chamblee was Boyle Midway, Inc., manufacturers of waxes and polishes, 3-in-One Oil, etc. Others to follow were the U. S. Envelope Company; the Write-Rite Company, manufacturers of school supplies, and the Albert Potteries, manufacturers of dinner and art ware. The equipment in this plant includes a continuous assembly line gas-fired kiln, where the clay products are baked at temperatures as high as 3200° F. Other large companies in Chamblee



*Chamblee's New City Hall and Fire Station*